

GREY COUNTY

Broadband Internet Service

RFP IT200809A



LEGEND

- Broadband Interest

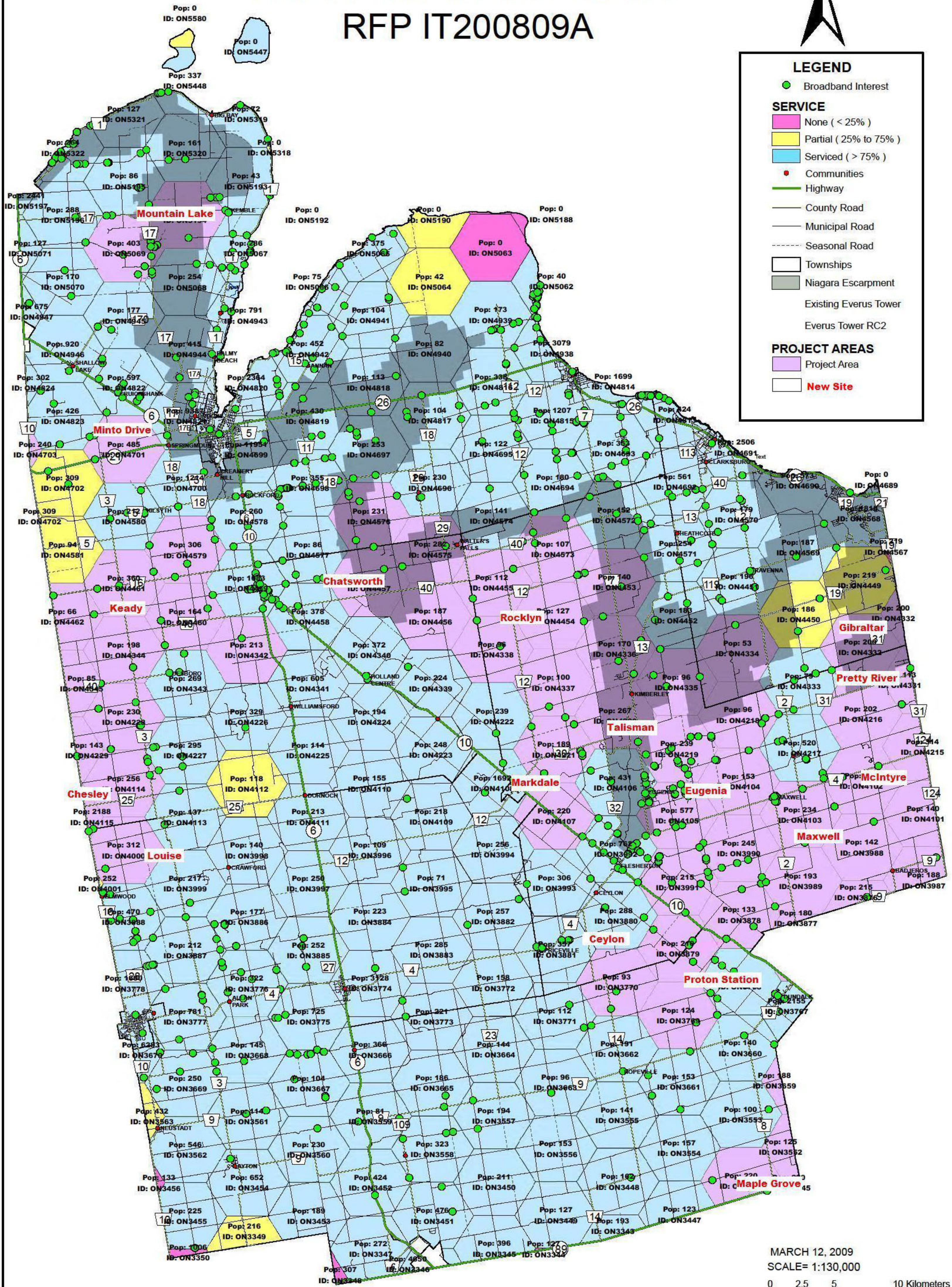
SERVICE

- None (< 25%)
- Partial (25% to 75%)
- Serviced (> 75%)

- Communities
- Highway
- County Road
- Municipal Road
- - - Seasonal Road
- Townships
- Niagara Escarpment
- Existing Everus Tower
- Everus Tower RC2

PROJECT AREAS

- Project Area
- New Site



MARCH 12, 2009
 SCALE= 1:130,000
 0 2.5 5 10 Kilometers

Author: County of Grey
 File Name: GC_hexagon_service.mxd
 Application: ArcInfo 9.3
 Date: August 12, 2010
 Projection: UTM Zone 17N, NAD 83
 Source: Teranet / MNR

This map is for illustrative purposes only. Do not rely on this map as being a precise indicator of routes, location of features or surveying purposes. This map may contain cartographical errors or omissions.